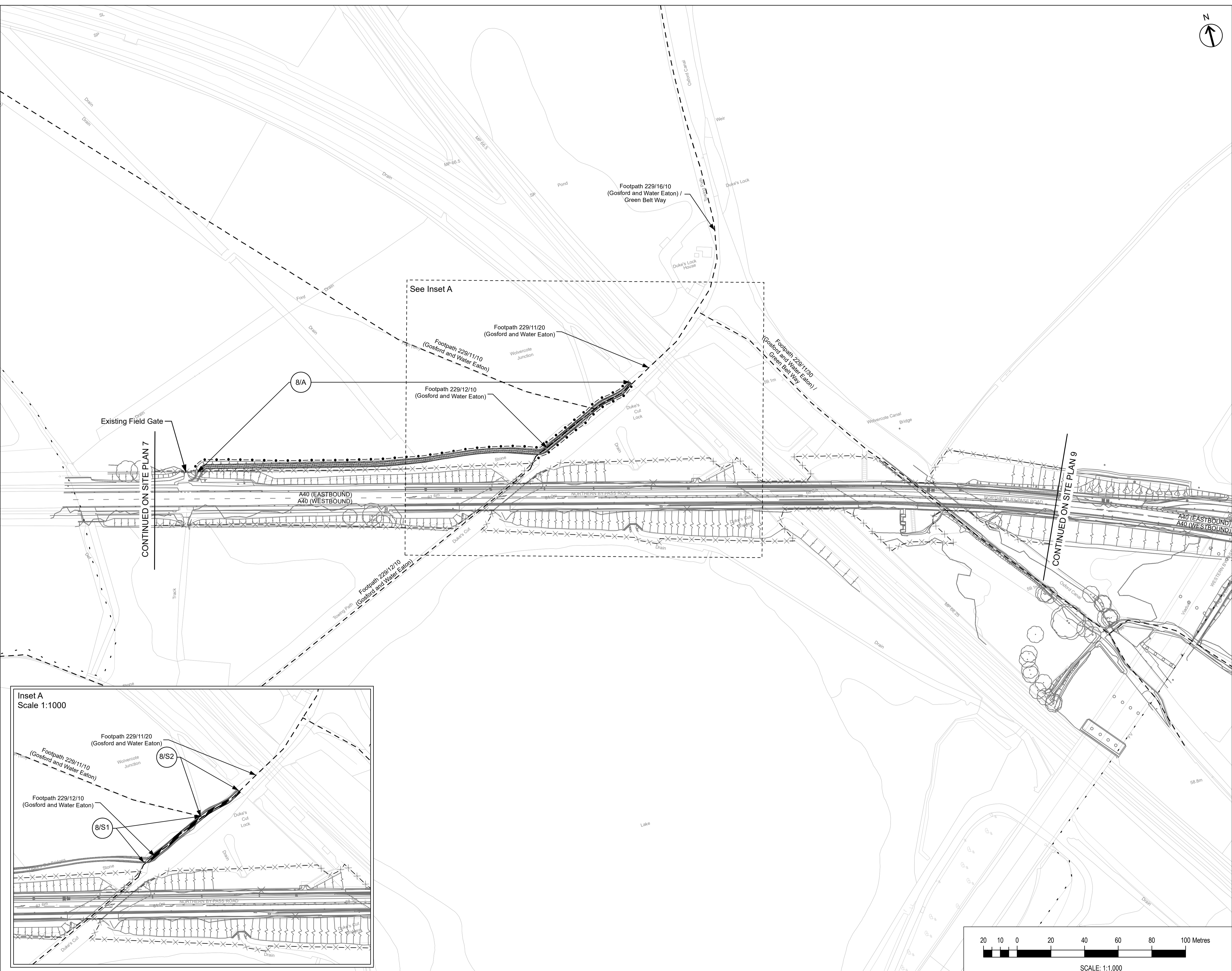
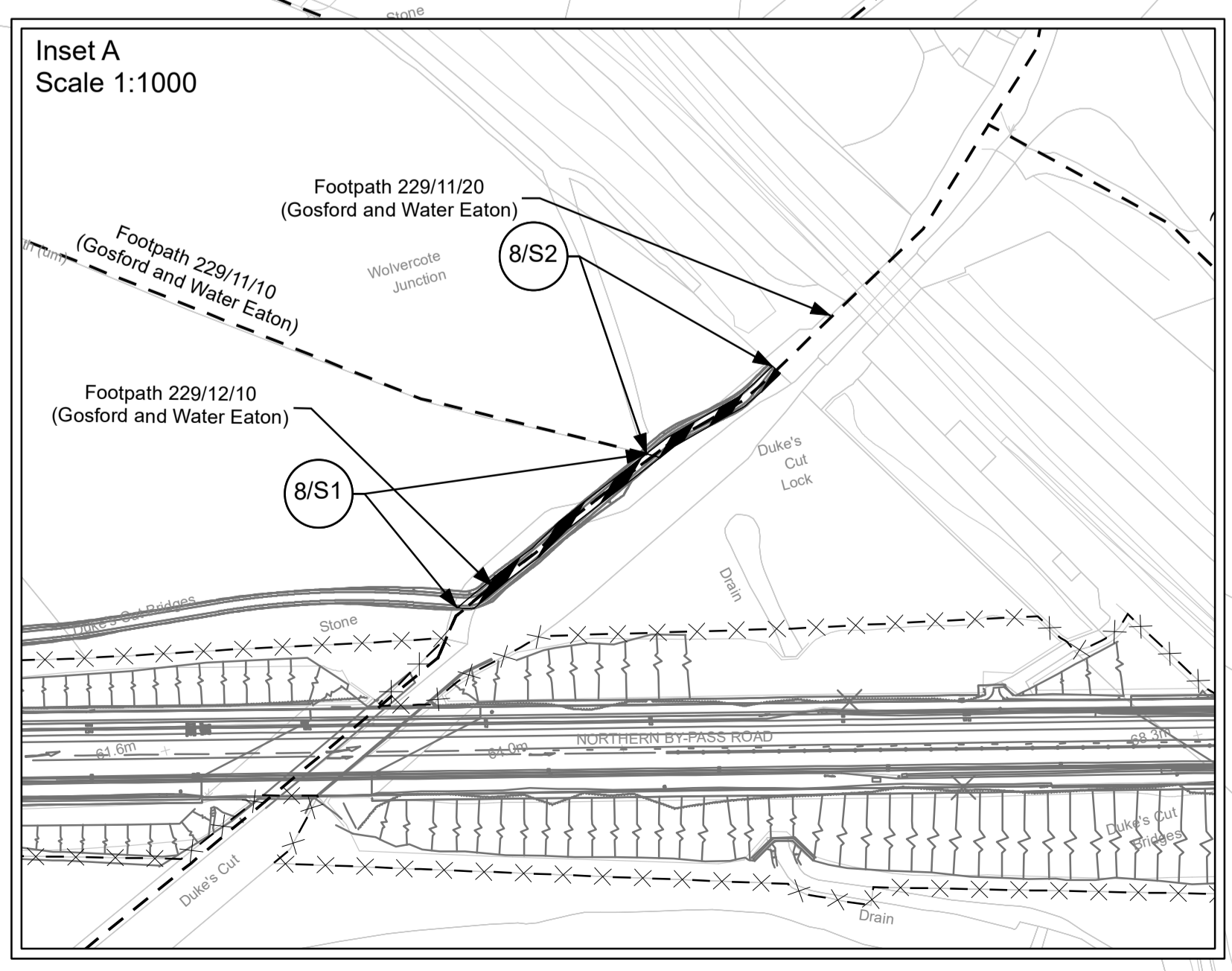


- NOTES:**
This Site Plan does not show widths or construction details
- Borough/Parish Boundary - - - - -
 - Public Right of Way - - - - -
- KEY:**
- Highway Boundary - - - - -
 - Classified Roads - - - - -
 - Highway to be stopped up
 - Highway to be improved
 - New Highway
 - Private Means of Access to be stopped up
 - New Means of Access



CONTINUED ON SITE PLAN 7

CONTINUED ON SITE PLAN 9



P03	SRO Provisions Updated	11/04/22	CG	SS	JH
P02	Annotations Updated	03/02/22	CG	SS	JH
P01	First Issue	31/01/22	CG	SS	JH
Rev	Description	Date	By	Check	Approved

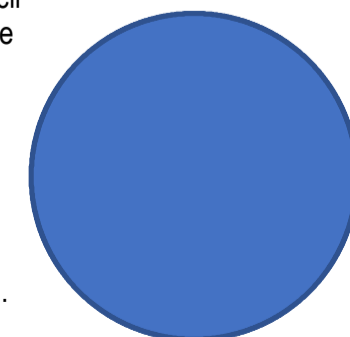
This map is reproduced from Ordnance Survey material with the permission of Ordnance Survey on behalf of the Controller of Her Majesty's Stationery Office. © Crown Copyright. Unauthorised reproduction infringes Crown Copyright and may lead to prosecution or civil proceedings. Oxfordshire County Council, 010023343, 2021



THE OXFORDSHIRE COUNTY COUNCIL
(HIGHWAYS INFRASTRUCTURE – A40
HIF2 SMART CORRIDOR
(HILL FARM TO DUKES CUT))
(SIDE ROADS) ORDER 2022

SITE PLAN 8 -
A40 DUKES CUT - DUKES CUT CROSSING, RAILWAY CROSSING AND OXFORD CANAL CROSSING TO WEST OF UNDERPASS CROSSING OF A34 WESTERN BY-PASS, AND NEW (NORTH) CYCLE TRACK LINK

The COMMON SEAL of Oxfordshire County Council was hereto affixed in the presence of –



Authorised Officer
Dated this day of 2022 Seal No.

Drawn	Checked	Approved	Date
CG	SS	JH	11/04/22

GH Project Number	Scale at A1
132861.005	1:1,000
Drawing Number	Revision
GH-132861005-SRO-8	P03

